

What is Community Policing in Lisbon?

Community Policing is a preventive, proactive and participative policing model that is oriented towards the resolution of community security problems. It differs from traditional models of policing in Lisbon in that it is jointly planned and operated by a partnership established between the Lisbon Municipal Police, local partners and residents. All members of this partnership recognise the importance of cooperation between the Police and the community in improving both actual security and citizens' feelings of security.

Territories with Community Policing



COMMUNITY POLICING IN LISBON

// safer Communities

Lisbon Municipal Police

Rua Cardeal Saraiva, 1070-045 Lisboa
pm@cm-lisboa.pt
+351 808 202 036

For more information about Lisbon Community Policing please visit:

www.lisboa.pt/policia-municipal

Name:

Contact:



COMMUNITY POLICING IN LISBON

// safer Communities



This project has received funding from the European Union's Horizon 2020 Research and Innovation programme under Grant Agreement No 787100



LISBOA



Community Policing in building safer communities

In the last decade, the **Lisbon Municipal Police** has developed a Community Policing strategy based on **establishing local partnerships** to improve community safety – these partnerships are referred to as Security Groups.

Through daily foot patrolling by dedicated **police teams assigned to specific territories**, Community Policing officers work with residents and local partners to jointly **identify and solve security problems** in those areas.

Objectives of Community Policing



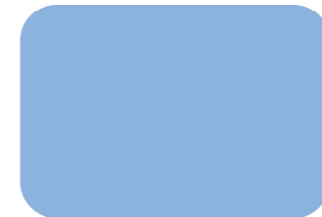
How is it operationalised?



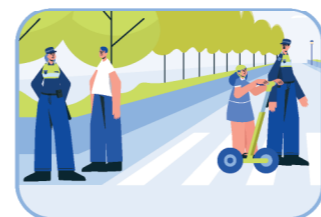
Foot patrolling by the Community Policing team of the Lisbon Municipal Police



Monthly meetings of the Security Group partners



Identification and joint resolution of problems in the public space



Promotion of security awareness actions in the community

Community Policing planning steps

The process of selecting and assigning police officers to a new Community Policing territory is **planned ahead with the partners of the Security Group**. This planning phase takes an average of one year and comprises the following steps:

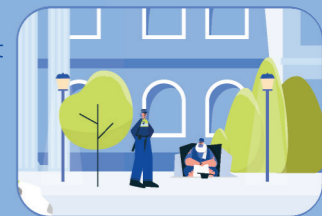


An innovative, customised and effective policing model

Community Policing teams can act quickly and effectively to **solve community problems**. As they maintain a constant, close connection with local partners, they are able to communicate directly with other municipal services to enable speedy resolution of security problems in the community.



Community Police officers bring to policing a unique set of interpersonal, communication and technical skills that allow them to deal with complex community situations. This is the result of specialised training and know-how developed through close interaction with communities and relevant social partners over the longer-term.



Being designated to specific territories over a long period of time enables **Community Policing teams** to gain recognition and acceptance by the population. This facilitates the building of a **trusting relationship between police and citizens'** and supports the communication of problems and security concerns by the community to the police.

Community Policing teams possess an in-depth knowledge of their territories – both in terms of community problems and of community resources. This contributes to **better planning and delivery of day-to-day policing in Lisbon**.

