

## PATROL - Polizeiliches Analysetool zur Recherche und Organisation von Lageinformationen für den Einsatz- und Streifendienst

Patrolling is an important tool for preventing and fighting crime. In addition to officers' daily experience, systematically prepared data is an essential basis for effective and efficient information transfer.



PATROL is a new process that has been specifically designed to meet the needs of police officers and enable an intelligence-enhanced approach to patrolling.

PATROL enables efficient communication of necessary information to operation and patrol service officers – at the time it is needed.

In collaboration with analysts and shift managers, PATROL was specifically developed for police officers.

**PATROL can be implemented by any police department as a standardised process for situation analysis and information dissemination.**

### Editor

State Office for Criminal Investigation  
Criminological Research  
Am Waterlooplatz 11, 30169 Hannover  
[kfs@lka.polizei.niedersachsen.de](mailto:kfs@lka.polizei.niedersachsen.de)  
0049 511 26262 1203

**PATROL** was developed based on research undertaken by the LKA in Lower Saxony as part of the EU-funded *Cutting Crime Impact* (CCI) project. For further details, visit: [www.cuttingcrimeimpact.eu](http://www.cuttingcrimeimpact.eu)



LANDESKRIMINALAMT  
NIEDERSACHSEN



CCI  
CUTTING CRIME  
IMPACT



This project has received funding from the European Union's Horizon 2020 research and innovation programme under grant agreement No 787100



LANDESKRIMINALAMT  
NIEDERSACHSEN



# PATROL.

**Polizeiliches Analysetool**  
zur Recherche und Organisation  
von Lageinformationen im Einsatz-  
und Streifendienst

*Police analysis and communication tool to support effective information-enhanced patrolling*



**PATROL** consists of three elements that are embedded in a standardised process:



**an analysis guide** for processing current crime and situation-related information

**a standardised process for daily briefings of shift managers** to effectively communicate this information

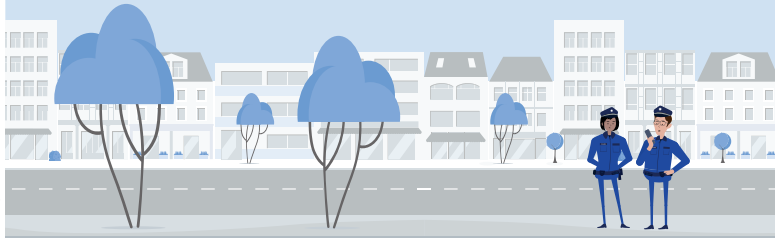


**a platform for the exchange of information** between police officers



The **PATROL analysis guide** supports the regional analysis unit in preparing the daily situation reports. It aims to make potential crime hotspots and developments visible. This information can be used directly by police officers and ensures an effective and targeted operation and patrol service.

If any information is missing, the police officers can use **NiMes (Niedersachsen Messenger)** of the Lower Saxony police to add information.



PATROL provides a **standardised process for daily face-to-face briefings**. This ensures that all current events and developments in the area of responsibility of shift managers are effectively communicated to the patrol at the start of their shift.



The daily situation can also be communicated via NiMes to officers' smartphones. NiMes is an internal protected information platform for the police of Lower Saxony.

For PATROL, a separate channel can be created in **NiMes** for all patrol officers, analysts and shift managers of the precincts for the operation and patrol service.

Via NiMes, all police officers receive updates quickly and directly and can exchange information. This ensures that the operation and patrol services are always up to date.



**PATROL** provides analysts and shift managers with practical guidance and templates for information sharing that support a structured briefing process for all police officers.

**PATROL** enables:

1. Improved information transfer through intelligence-enhanced briefing
2. Optimisation of the information and knowledge-base that supports officers on daily patrol duty
3. More effective police patrolling.



**PATROL** was developed by the LKA Lower Saxony in collaboration with the local police as part of the EU-funded *Cutting Crime Impact (CCI)* project.